

► Oggetto

La seguente guida illustra come aggiungere le telecamere LILIN in Milestone XProtect.

► Dispositivi

Serie di telecamere: **V1, Z6, P6, Z7, S7, S8**
Versione Milestone: **2023 R1**

Nota: le funzionalità compatibili possono variare a seconda dei modelli di telecamere, firmware e plugin.

► Attivare il profilo M

Accedere al menù della telecamera **Setup / LPKG / cliccare l'icona**.

The screenshot shows the LILIN camera management interface. At the top, there is a navigation bar with the LILIN logo and links for Live, Language, and Logout. Below this is a menu with tabs for System, Video, Controls, Network, SmartEvent, Notification, Maintenance, and LPKG. The LPKG tab is selected and highlighted with a green box. Below the menu, there is a breadcrumb trail: LPKG > Setup > LPKG > LPKG. The main content area is divided into two sections: System Resource and Camera Plug-in. The System Resource section shows CPU Loading (78.57%), Storage Resource (298 M), and Memory Resource (662.72 M). The Camera Plug-in section shows a checked checkbox, a trash icon, and a camera icon labeled Aida. The camera details include: LILIN Aida Camera Plug-in, Company URL (http://www.meritlilin.com), Author (LILIN <fae@meritlilin.com.tw>), Port (#8592), Status (Running), Version (1.4.2.75-mod001), WAN Port (input field), and LAN IP (http://192.168.1.204:8592/Aida/index.html).

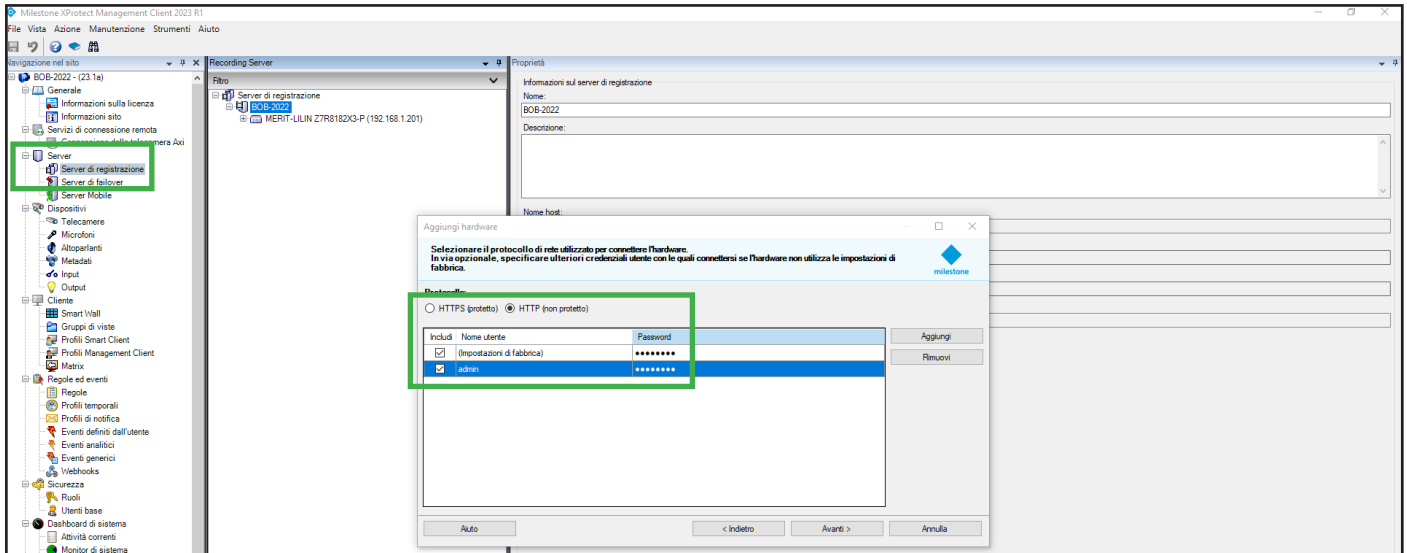
Attivare ONVIF Profile M e cliccare **Applica**.

The screenshot shows the LILIN camera configuration interface. At the top, there is a navigation bar with icons for ALARM, OUTPUT, SETTING, and ABOUT. The SETTING icon is selected and highlighted with a green box. Below the navigation bar, there is a General settings section. The ONVIF Profile M setting is checked and highlighted with a green box. The other settings include: Language (English), Synchronize camera settings (Sync), Port # (8592), Enable low CPU usage (unchecked), Same ID Object in same location trigger only once (checked), Enable metadata base64 JPEG (snapshot, FTP, email) (unchecked), and Metadata encoder # (3). A note at the bottom says: Please set encoder [Output Frame Rate] to 15 or less and set.

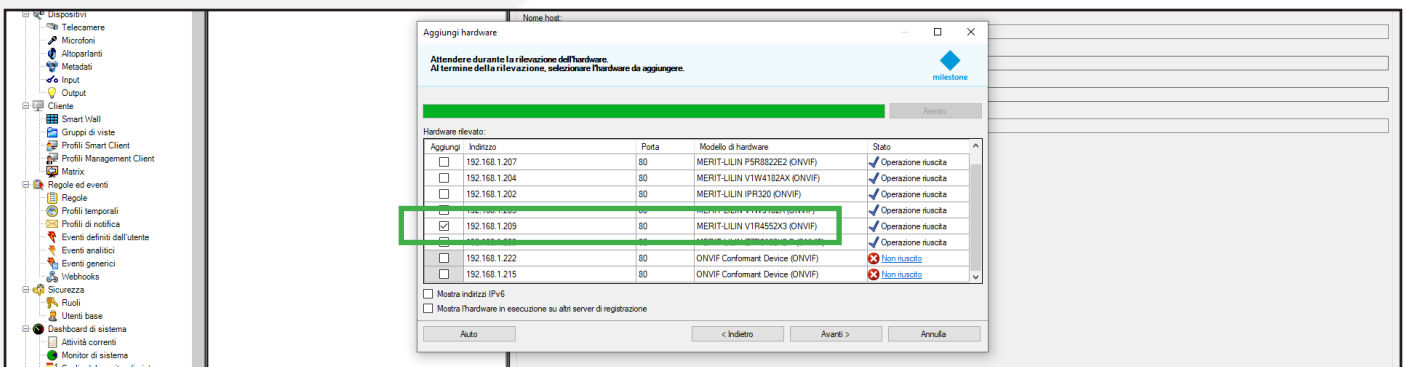
► Aggiungere una telecamera LILIN in Milestone

Accedere al pannello di controllo **Management Client**, accedere alla sezione **Server / Server di registrazione** e **aggiungere un nuovo dispositivo**.

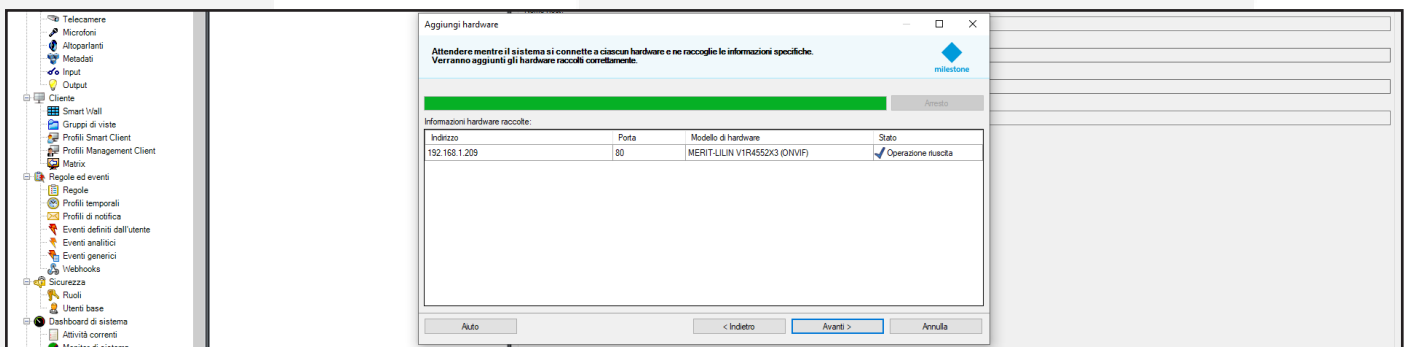
Inserire **nome utente** e **password** della telecamera e selezionare **HTTP**.



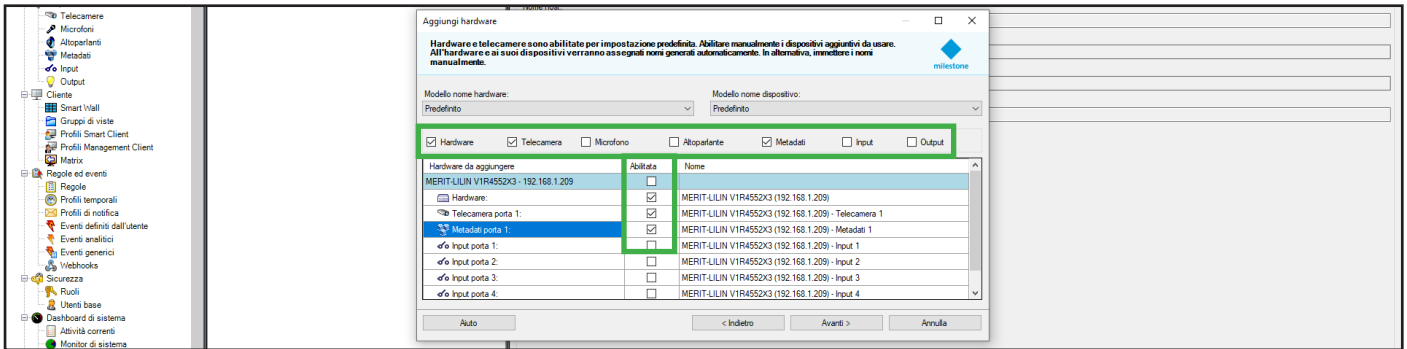
Verranno rilevate tutte le telecamere presenti in rete, selezionare quelle desiderate.



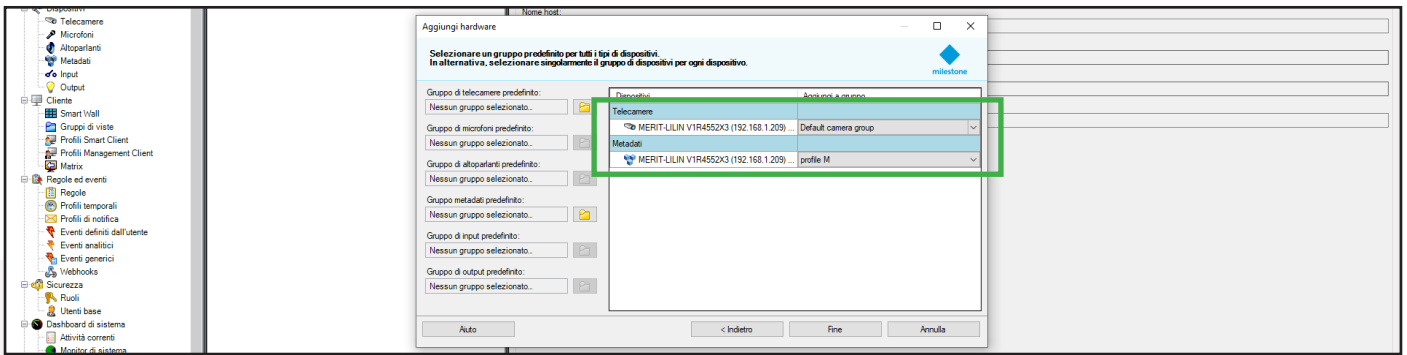
Se i dati inseriti sono corretto, comparirà il messaggio **Operazione Riuscita**.



Nell'elenco delle funzioni rilevate, selezionare quelle desiderate.



Assegnare la telecamera e le altre funzionalità al gruppo desiderato.



Al termine è possibile definire quale flusso mostrare nel Live e in Registrazione.

